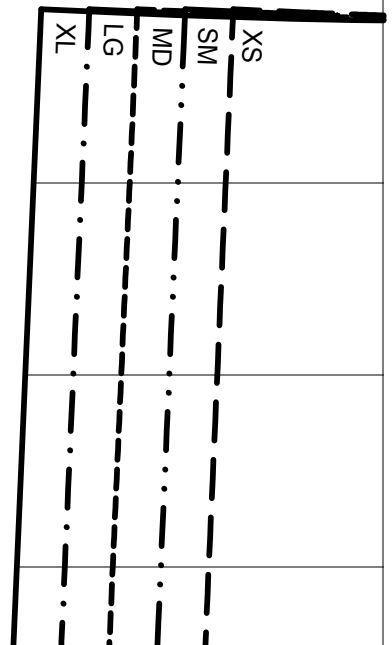
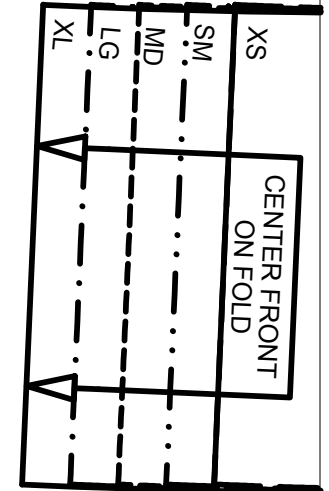
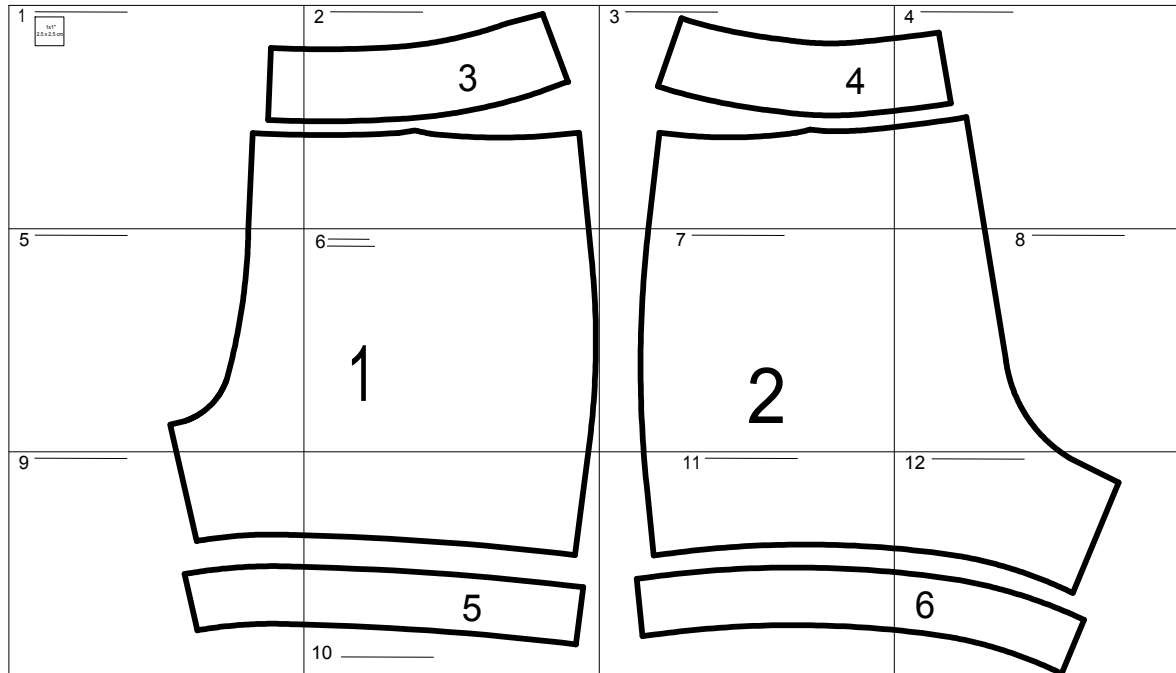


1

Anna Maria for Janome - 'Pleasant Pathways Shorts'

1x1"
2.5 x 2.5 cm

ANNA MARIA for JANOME - 'PLEASANT PATHWAYS SHORTS' ASSEMBLY GUIDE
pattern with pdf pages mapped. Finished box = 41x23.25" (104.14x59.1cm)



2

Anna Maria for Janome - 'Pleasant Pathways Shorts'



Anna Maria

for Janome

PLEASANT PATHWAYS SHORTS

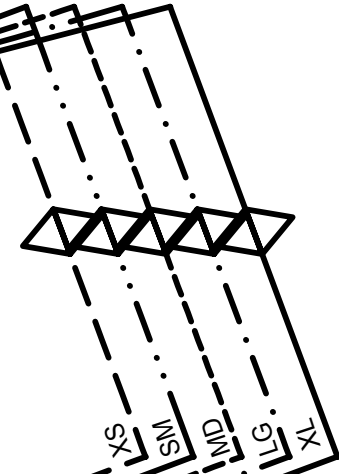
Copyright 2013, Janome

FRONT WAIST FACING

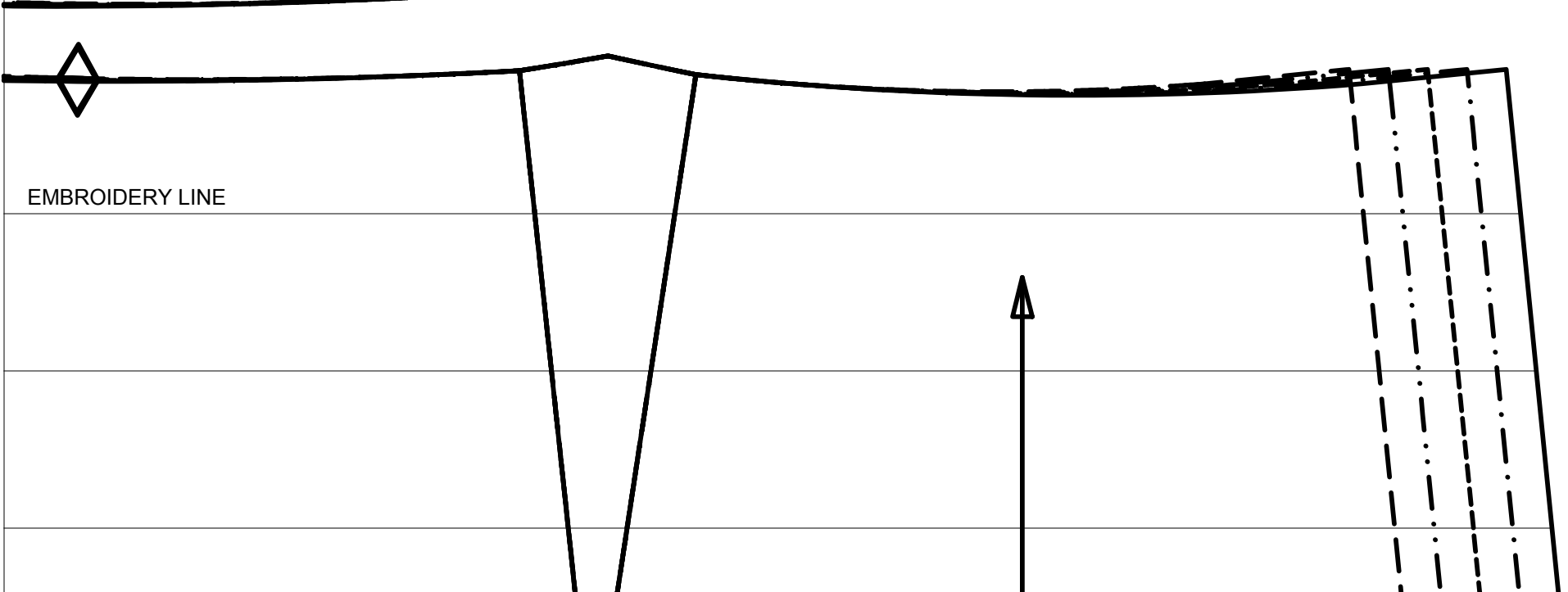
3

Cut 1 on fold

5/8" (1.5cm) seams allowed

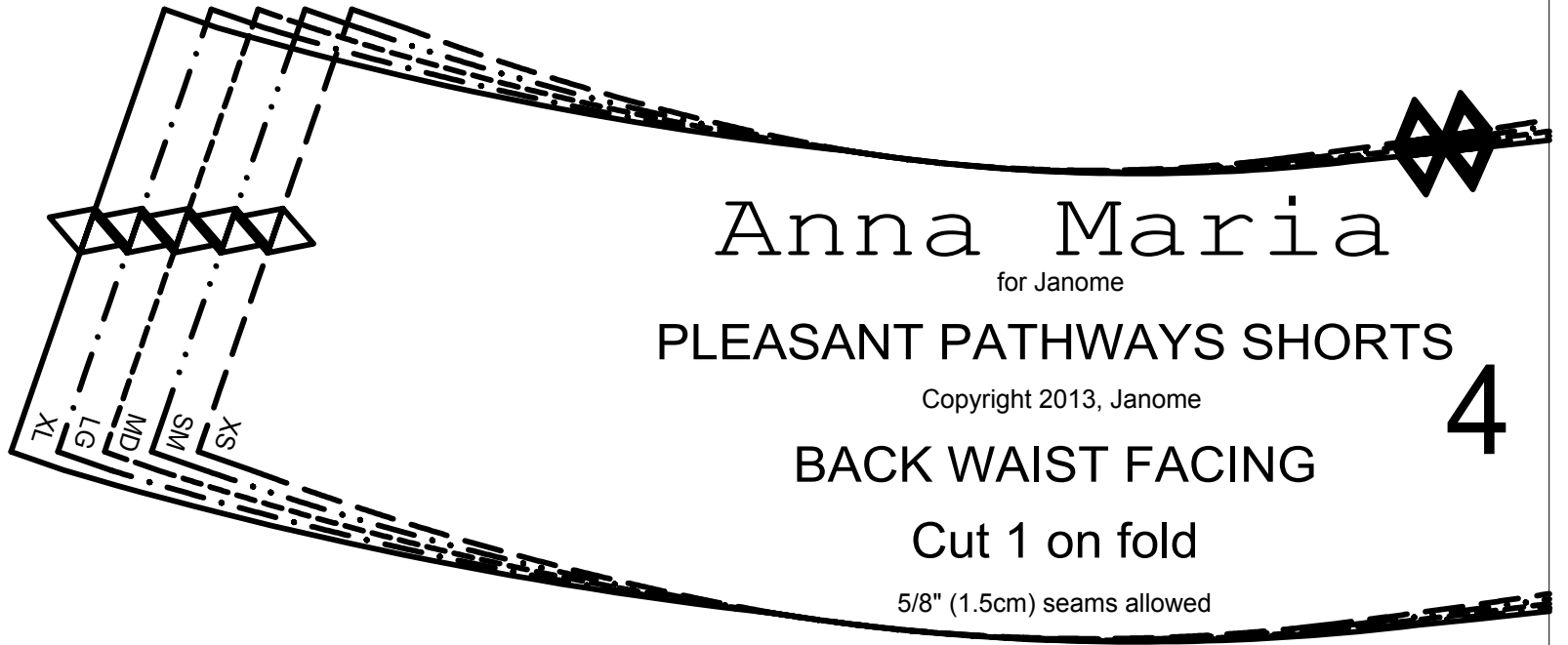


EMBROIDERY LINE



3

Anna Maria for Janome - 'Pleasant Pathways Shorts'



Anna Maria

for Janome

PLEASANT PATHWAYS SHORTS

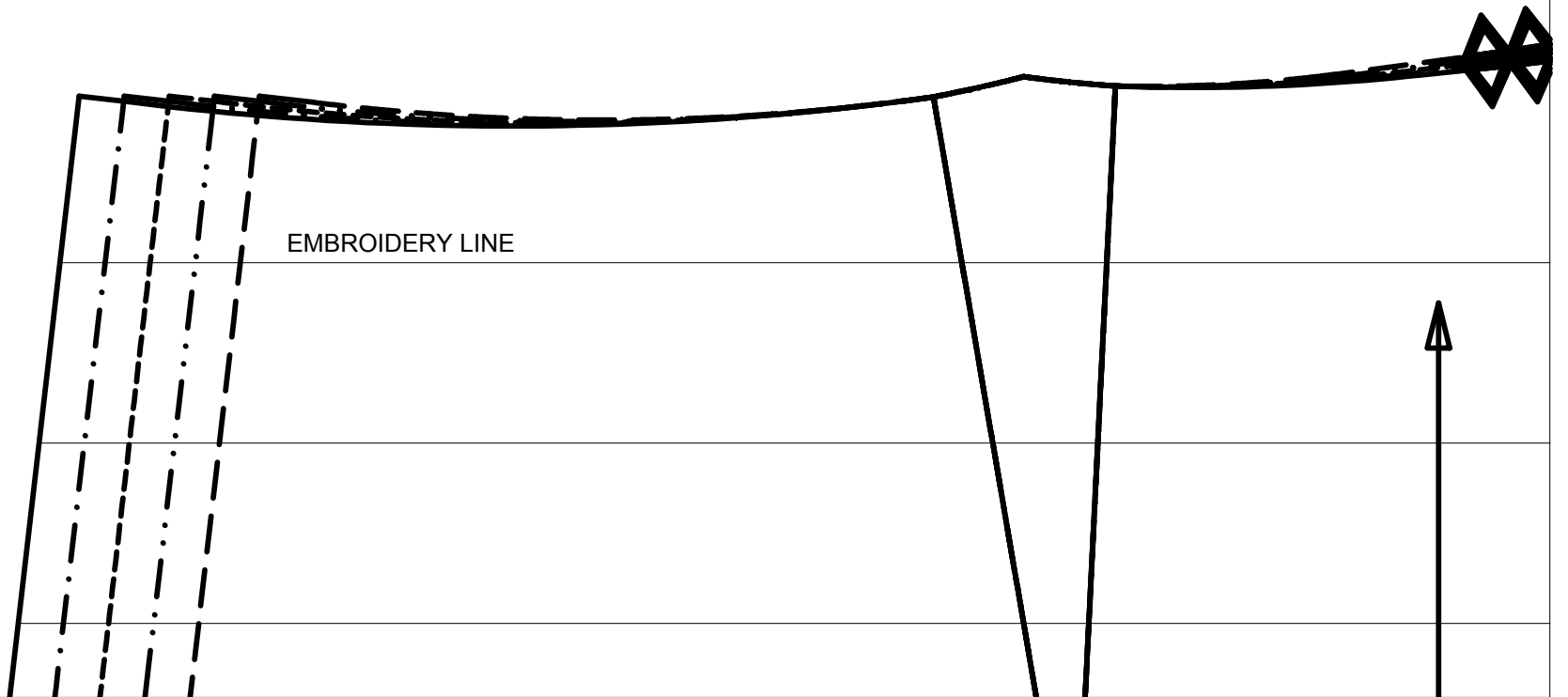
Copyright 2013, Janome

BACK WAIST FACING

Cut 1 on fold

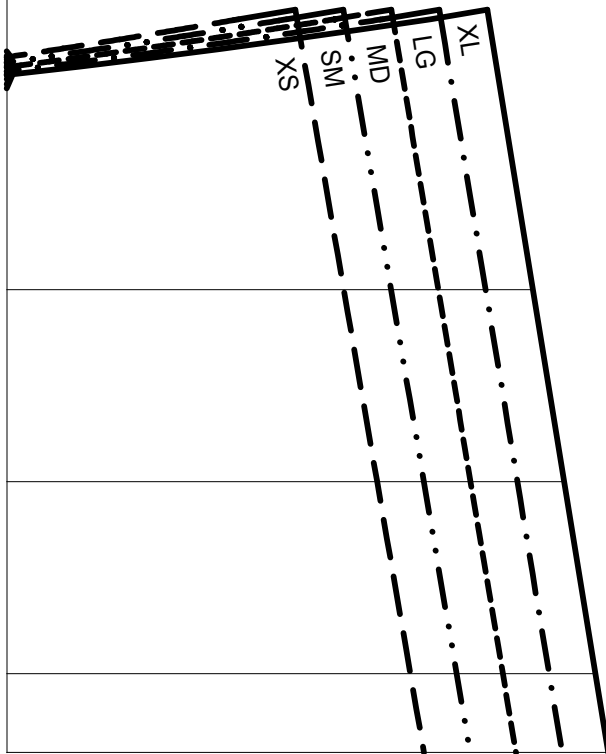
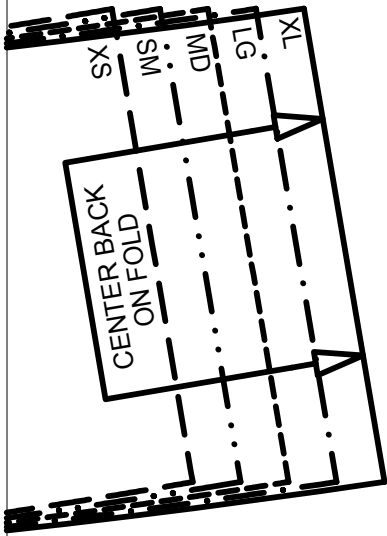
5/8" (1.5cm) seams allowed

4



EMBROIDERY LINE





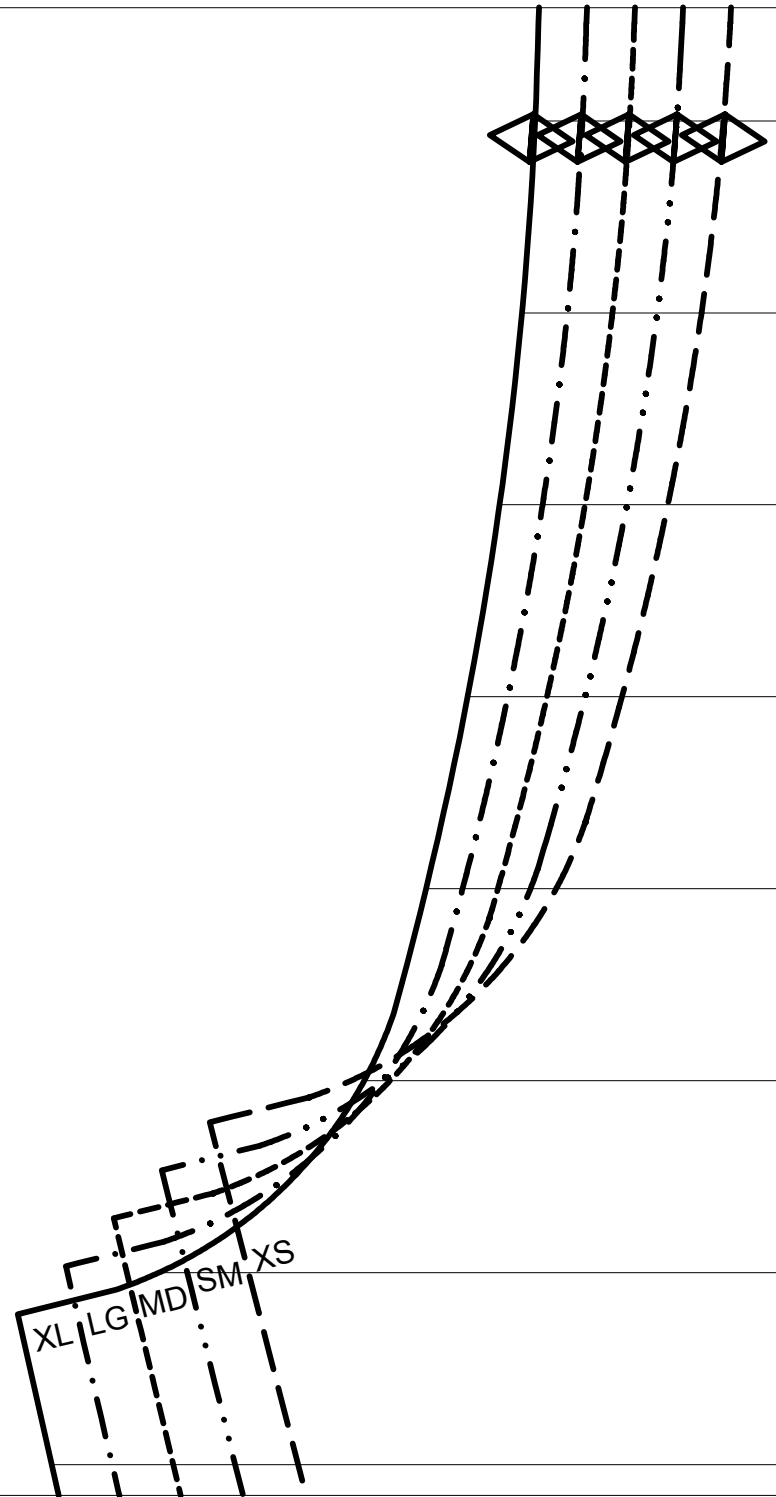
A FEW TIPS FROM ANNA MARIA!

- * I always recommend washing, drying and pressing your materials before beginning your sewing project.
- * It never hurts to have some inexpensive muslin in your sewing stash to try out a new pattern before using an expensive or cherished material.
- * ALWAYS read the pattern instructions all the way through and look over the pattern pieces before beginning your cutting and sewing.

Visit annamariahorner.com for more inspiration and information on books, fabrics, other sewing patterns, free patterns and more!

5

Anna Maria for Janome - 'Pleasant Pathways Shorts'



6 Anna Maria for Janome
'Pleasant Pathways Shorts'



sewing patterns

for Janome

PLEASANT PATHWAYS SHORTS

Copyright 2013, Janome

FRONT

Cut 2

5/8" (1.5cm) seams allowed

1

GRAIN LINE

ZIPPER OPENING TO DOT LEFT SIDE

XS SM MD LG XL

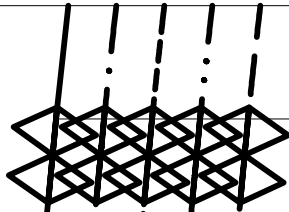
All designs are copyright Anna Maria Horner for Janome 2013.
This pattern is intended only for non-commercial,
personal purposes and may not be used in the
production of goods for sale in any form.
For more information send an e-mail to:
customerservice@annamariahorner.com

FINISHED GARMENT MEASUREMENTS

	XS	SM	MD	LG	XL	
INCHES						
WAIST:	27-3/4	29-3/4	31-3/4	33-3/4	35-3/4	in.
HIP:	37-3/4	39-3/4	41-3/4	43-3/4	45-3/4	in.
SIDE LENGTH:	23-7/8	24-1/4	24-5/8	25	25-3/8	in.

7

Anna Maria for Janome - 'Pleasant Pathways Shorts'



ZIPPER OPENING TO DOT LEFT SIDE

XL LG MD SM XS



sewing patterns



for Janome

PLEASANT PATHWAYS SHORTS

Copyright 2013, Janome

BACK

Cut 2

5/8" (1.5cm) seams allowed

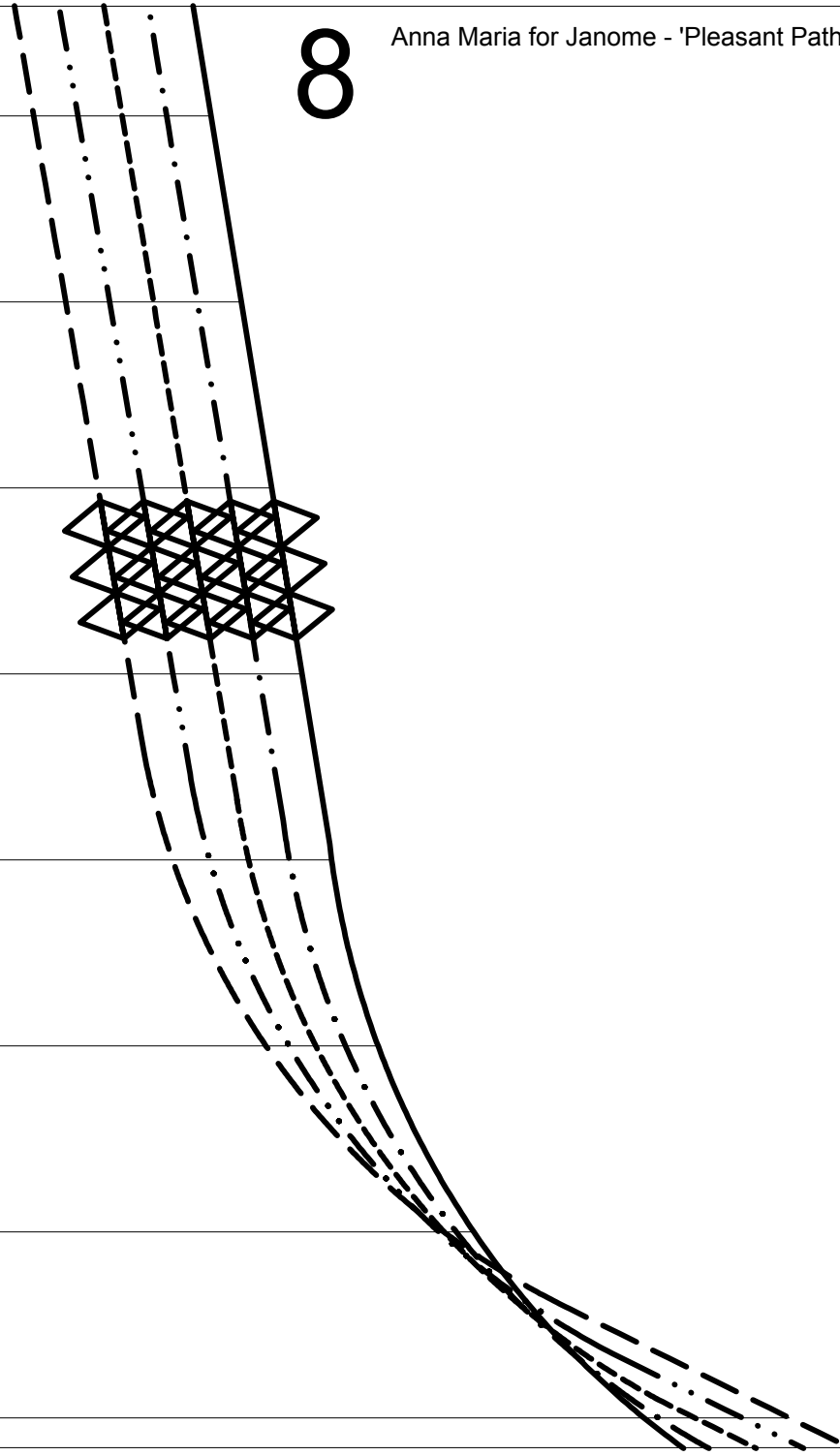
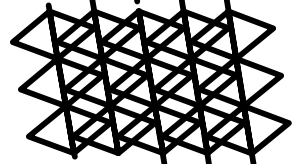
2

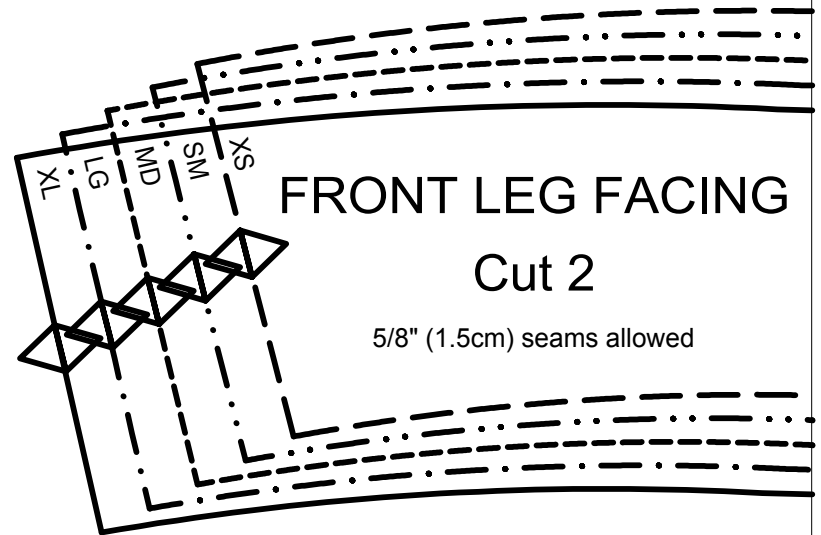
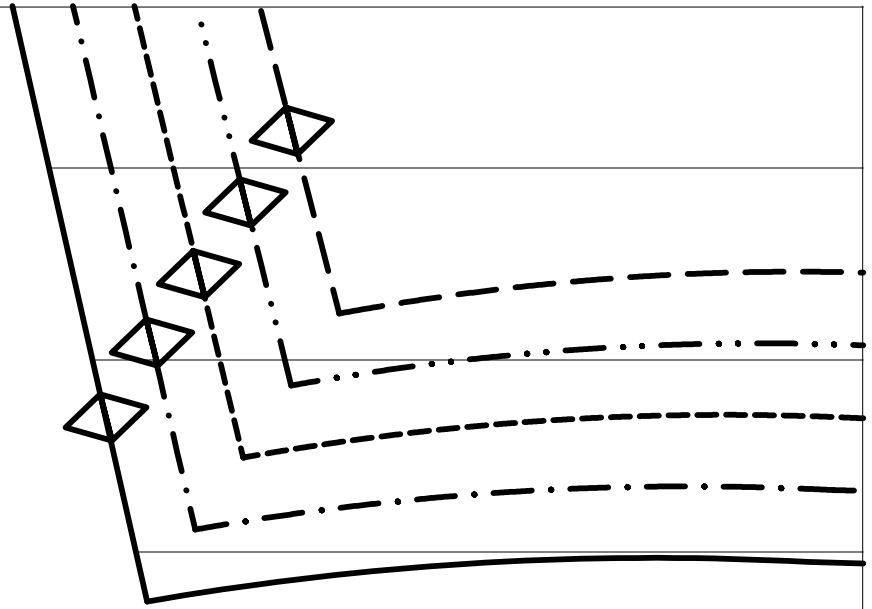
GRAIN LINE



8

Anna Maria for Janome - 'Pleasant Pathways Shorts'





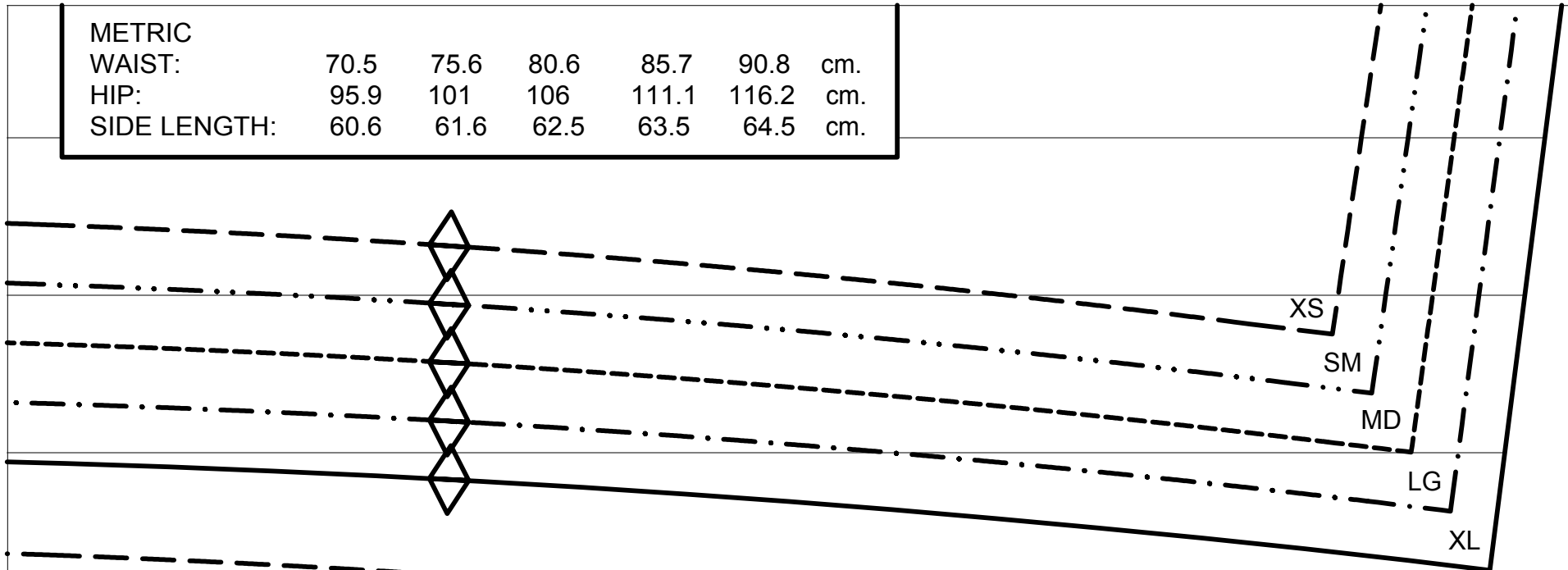
FRONT LEG FACING

Cut 2

5/8" (1.5cm) seams allowed

METRIC

WAIST:	70.5	75.6	80.6	85.7	90.8	cm.
HIP:	95.9	101	106	111.1	116.2	cm.
SIDE LENGTH:	60.6	61.6	62.5	63.5	64.5	cm.



Anna Maria

for Janome

PLEASANT PATHWAYS SHORTS 5

Copyright 2013, Janome

GRAIN LINE

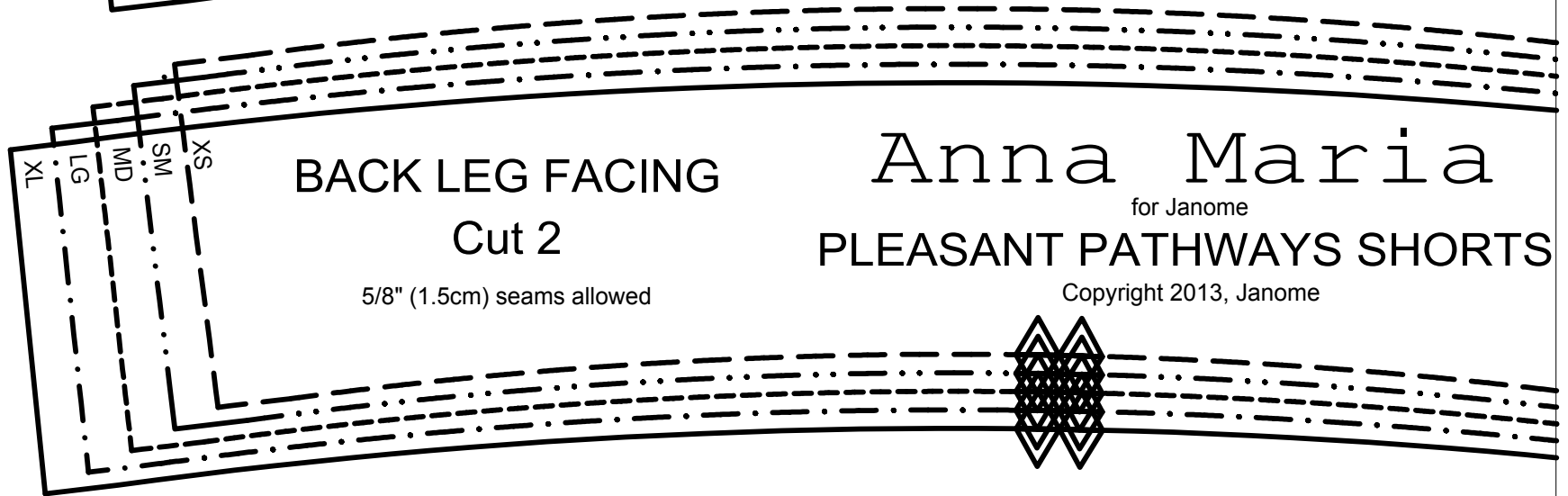
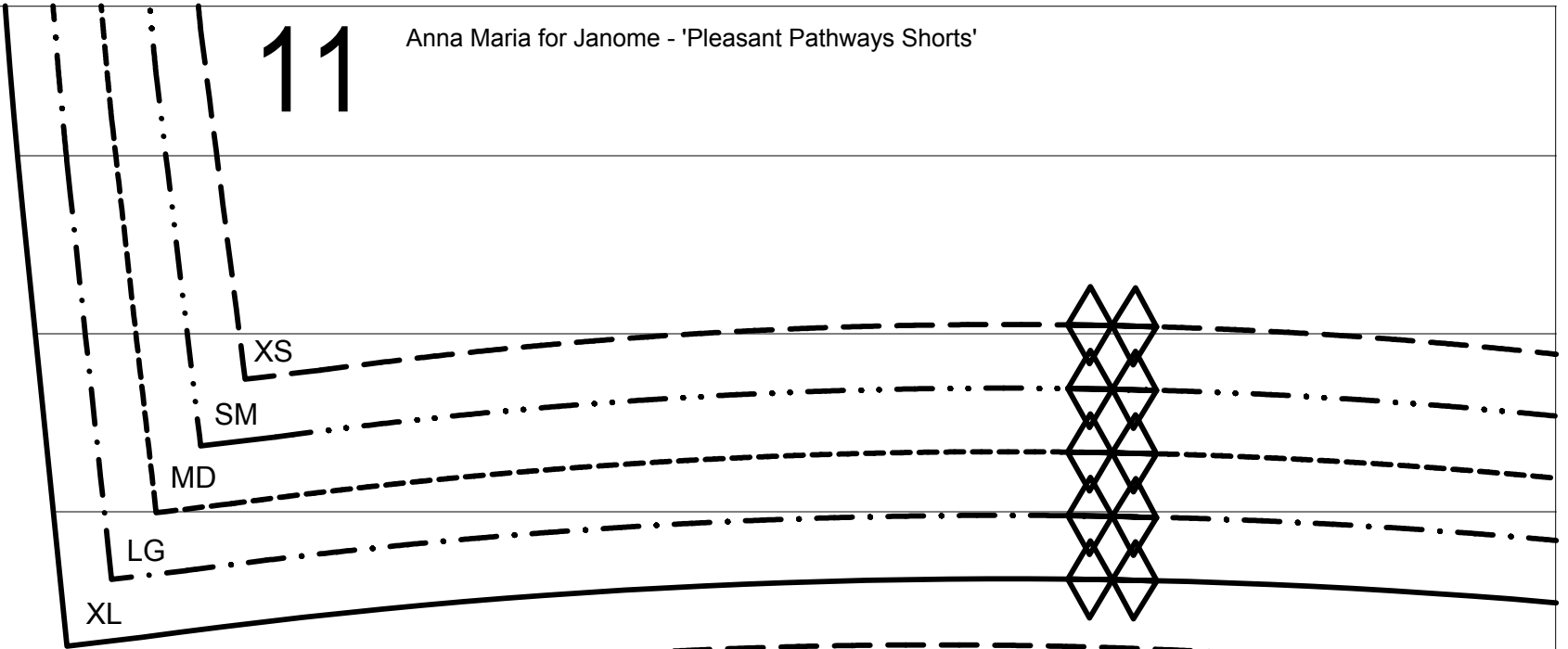


10

Anna Maria for Janome - 'Pleasant Pathways Shorts'

11

Anna Maria for Janome - 'Pleasant Pathways Shorts'



BACK LEG FACING

Cut 2

5/8" (1.5cm) seams allowed

Anna Maria

for Janome

PLEASANT PATHWAYS SHORTS

Copyright 2013, Janome

12

Anna Maria for Janome - 'Pleasant Pathways Shorts'

